



**digital and stills**

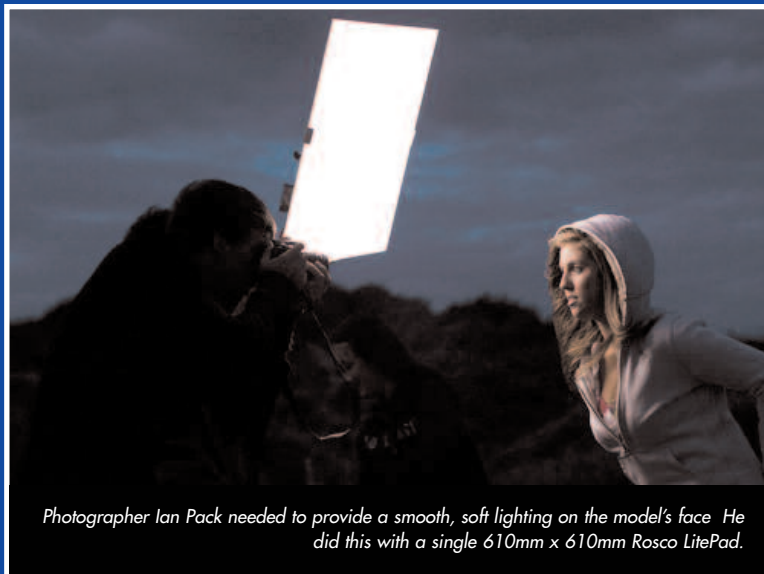
# photography ideas

how rosco products can  
enhance your photography

# litepad



*Rosco LitePads provide a diffused, daylight balanced light that remains cool to the touch, protecting the baby's delicate skin.  
Photography by: Vicki Huckle - Pennycrest Photography.*



*Photographer Ian Pack needed to provide a smooth, soft lighting on the model's face. He did this with a single 610mm x 610mm Rosco LitePad.*



*Lighting by Rosco LitePad.  
Photography by: Ian Pack.*

# litepads

LitePad™ is a slim profile light source (8mm thick) that creates a soft, even source of light. Its small form factor and light weight make it perfect for use in many locations where larger conventional luminaires simply cannot fit.

## litepad HO+

LitePad HO+ is a slim profile, edge-lit LED light source. At only 8mm thick, LitePad HO+ is able to fit in places where conventional light sources will not. LitePad HO+ produces a soft quality of light that is easy on the eyes and runs at cool temperatures. Available in eight standard sizes, LitePad HO+ has LEDs on all four sides of the perimeter for maximum brightness. An interior connector provides a solid power connection directly on the LitePad itself. Available in both daylight and tungsten colour temperatures, LitePad HO+ can fit a wide variety of applications.

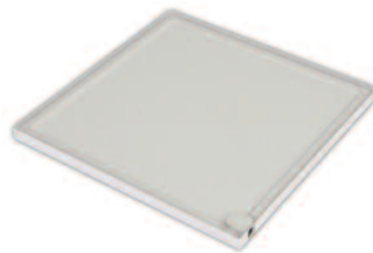
## litepad axiom

LitePad Axiom is a revolutionary LED light from Rosco specifically designed for filmmakers, videographers and still photographers.

Its steel and aluminum housing is designed not only to protect the light source, but to make a variety of mounting solutions quick and easy. The back of the housing has a universal mounting system allowing the LitePad Axiom to be affixed with brackets to C-Stands or mounted with Velcro, rubber bands or other conventional methods. The housing includes a gel slot for adding Roscolux or Cinegel colour or diffusion.

## litepad kits

Rosco offers four different kits for digital shooters, still photographers and filmmakers. Each of the four is available with a full complement of Axiom LitePads and the required accessories for focusing, mounting, and colouring. Kits can be specified with either daylight-level output LitePads or tungsten-level output. A fifth kit, the HO+ Everywhere Kit, is equipped with both tungsten and daylight level HO+ LitePads.



# litepad loop



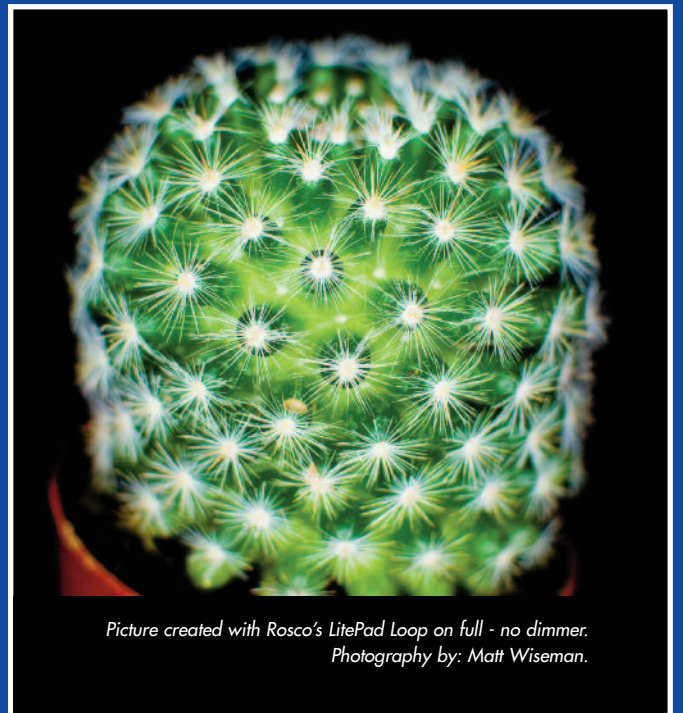
Photograph created with LitePad Loop used as supplemental lighting. Notice the shadowless results as well as the eyelight. Photography by: Frederik Herregods. <http://www.frederikherregods.be/>

LitePad Loop  
Light Masks.

Photograph created with LitePad Loop and a Lines LitePad Loop Light Mask (see the eyelight) Photography by: Matt Wiseman.



Picture taken with camera flash. Photography by: Matt Wiseman.



Picture created with Rosco's LitePad Loop on full - no dimmer. Photography by: Matt Wiseman.

# litepad loop

Rosco is proud to introduce the LitePad Loop. Designed for the professional and amateur photographer, LitePad Loop is sleek, easy to use, and produces a great quality of light.



LitePad Loop is comprised of two main parts - the Loop itself and the mounting assembly.

The Loop is equipped with a durable and lightweight plastic housing, providing both portability and safety. The plastic housing also turns this LitePad into a consumer level product. The mounting assembly is based on industry standard camera rod support systems. It allows for full control over the position of the Loop in relation to the camera lens. Most photographers prefer on-axis lighting in a ring light, such as the LitePad Loop can offer. The most innovative aspect of the product is how these two pieces combine. With the use of high-powered magnets, the LitePad Loop simply snaps onto the Mounting Assembly. No screws or adaptor collars required and the magnets are strong enough to hold the Loop on even if the light is bumped or jarred. If you want to take the Loop off the Mounting Assembly, just pull!

Circular highlights produced in the subject's eye is also a very desirable effect caused by the ring light, these can be enhanced using the LitePad Loop light masks in various designs.

For more creative lighting options, Rosco offers the Colour Filter Pack designed to fit on the LitePad Loop. The Colour Filter Pack includes filters for warming the colour temperature (CTO Filters), Minusgreen, and Cosmetic filters, perfect for enhancing flesh tones.



*Rosco's LitePad Loop assures on-axis lighting with the camera lens*



*LitePad Loop Retail Box*



*LitePad Loop Pro Kit, which includes many accessories*

# colour in photography lighting



Lighting was a mix of natural light and strobe. The key light was a 22" Beauty Dish with Roscolux 3202 Full Blue. Cinegel 3409 - RoscoSun 1/4 CTO was used for accent lighting. The image was then white balanced in Photoshop which shifted the accents to a blue bias. Photography by: [www.hernanphotography.com](http://www.hernanphotography.com)



The key light was a 22" Beauty Dish with 2 x 60" umbrellas fitted with Roscolux 4915 Lavender. Roscolux 4760, 302 and 4260 were used as accent lighting. A Rosco fog machine was used in front of accent lights. [www.eddiegriffin.com](http://www.eddiegriffin.com) - Photography by: [www.hernanphotography.com](http://www.hernanphotography.com)



The key light was a white shoot through an umbrella fitted with Roscolux 02 - Bastard Amber. 2 x white umbrellas were fitted with Roscolux 4915 Lavender and a strip light with Roscolux 302 Pale Bastard Amber. Photography by: [www.hernanphotography.com](http://www.hernanphotography.com)

# rosco colour filter products

Rosco offers four ranges of colour filters, each one ideal for use in all types of photography. Whether the application is portraiture, still life or macro photography there is a colour filter for each application. Rosco has been manufacturing colour filters for many years around the world and is now entering into the world of photography, Rosco brings a wealth of experience and expertise along with it.



## supergel

Among the most popular colour filter range in the world, ideal for hot continuous studio lights. Supergel was introduced in Europe in 1976 and now offers 145 colours and diffusers. Its popularity is due partly to the wide choice of colours, but also because this engineered plastic is the most durable filter available. Sizes are 50cm x 61cm sheets and 61cm x 7.62m rolls.

## roscolux

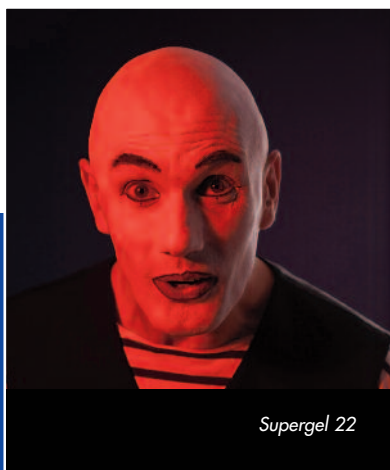
A widely used range of filter, great for diffusion material and special effect colours for colouring backgrounds etc. Roscolux includes well over 100 different colours and dozens of diffusers. Sold in 53cm x 61cm or 53cm x 1.2m sheets and 1.2m x 7.62m rolls.

## e-colour+

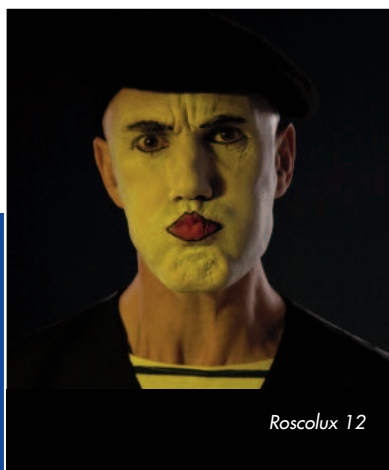
Rosco introduced E-Colour+ in 2000. It retains the same numbers and names as the original Cinemoid™ system with many Rosco colours familiar to photographers and filmmakers. E-colour+ is great for everyday colour correction, diffusion or primary colours, Sold in 1.22m x 7.62m rolls and sheets that are 61cm x 53cm or 53cm x 1.22m.

## cinegel

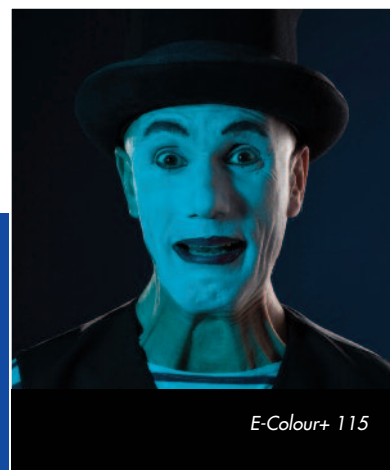
The Cinegel range was developed for filmmakers and TV lighting professionals. It won an Academy Award for technical achievement from the Academy of Motion Picture Arts and Sciences in 1974. Since then Cinegel has been used in photography to colour flashguns around the world and is the gel of choice for the Rosco Strobist collection. Sheets are 50cm x 61cm and rolls are of various sizes.



Supergel 22



Roscolux 12



E-Colour+ 115

# strobist collection for photography lighting



Photographed on a white background using  
Roscolux 375 Cerulean Blue  
Photography by: Frank Lambrechts



Photographed on a white background  
using Roscolux 358 Rose Indigo  
Photography by: Frank Lambrechts



Photographed on a white background  
using Roscolux 90 Dark Yellow Green  
Photography by: Frank Lambrechts



Photograph created using Cinegel 3408 Sun 1/2 CTO filter.  
Photography by: Rob Mitchell - Stillmation.com  
MU&H: Inge Van den Broeck for MAC.



Photograph created using Cinegel 3408 Sun 1/2 CTO  
filter. Photography by: Rob Mitchell - Stillmation.com  
MU&H: Inge Van den Broeck for MAC.



# rosco strobist collection

The Strobist Collection is a superb product for professional photographers who regularly work with on-board flash or strobe light. Rosco has packaged 55 pieces of 3.8cm x 8.2cm (1.5" x 3.25") filters selected from the Rosco range of filters. These are perfectly sized to fit most shoe-mount stobes.

Included in the Strobist Collection are multiple copies of three different CTB filters (Full, 1/2 and 1/4)



Photographed using Roscolux 12  
Straw (Yellow)  
Photography by: Matt Wiseman



Photographed using Roscolux 23  
Orange  
Photography by: Matt Wiseman



Photographed using Roscolux 33 No  
Color Pink  
Photography by: Matt Wiseman

## The Strobist Kit contains:

### 1 each

- Roscolux #12 Straw (Yellow)
- Roscolux #23 Orange
- Roscolux #26 Light Red
- Roscolux #33 No Color Pink
- Roscolux #39 Skelton Exotic Sangria (Magenta)
- Roscolux #358 Rose Indigo (Purple)
- Roscolux #80 Primary Blue
- Roscolux #375 Cerulean Blue (Cyan)
- Roscolux #90 Dark Yellow Green

### 2 each

- Cinegel #3415 N.15 Neutral Density
- Cinegel #3403 N.6 Neutral Density
- Cinegel #3404 N.9 Neutral Density



### 5 each

- Cinegel #3202 Full CTB - Cooling Filter
- Cinegel #3204 1/2 CTB - Cooling Filter
- Cinegel #3208 1/4 CTB - Cooling Filter
- Cinegel #3401 Sun 85 CTO - Warming Filter (Converts 5500° Flash to 3200° Tungsten)
- Cinegel #3408 Sun 1/2 CTO - Warming Filter
- Cinegel #3409 Sun 1/4 CTO - Warming Filter
- Roscolux #08 Pale Gold - Warming Filter (With a small amount of pink for skin tones)
- Cinegel #3304 Tough Plusgreen - Adds green to flash to match cool white fluorescent bulbs.

# kits for photography lighting



*When Tom Museeuw took his son for a walk on the beach he couldn't resist taking this photograph using 204 Full CTO  
Photography by: Tom Museeuw, Fotofolio.*



*Photograph created using E-Colour+ 201. and Rosco's Alpha 900 Fog Machine  
Photography by: Frank Lambrechts.*



*Model wearing dress of Rosco colour filter. Photograph created  
using E-Colour+ 111 and Rosco's Alpha 900 Fog Machine  
Photography by: Frank Lambrechts.*

# filter kits

## colour effects kits

The twelve colours in these kits are the most popular selections from the 300 plus colours that Rosco produces. Packaged: 30.48cm x 26.08cm

### Cool/Warm

103	Straw
110	Middle Rose
205	Half CT Orange
192	Flesh Pink
134	Golden Amber
162	Bastard Amber
122	Fern Green
115	Peacock Blue
245	Half Plus Green
202	Half CT Blue
117	Steel Blue
136	Pale Lavender

### Saturated Colours

101	Yellow
106	Primary Red
139	Primary Green
119	Dark Blue
158	Deep Orange
128	Bright Pink
104	Deep Amber
111	Dark Pink
116	Medium Blue Green
197	Alice Blue
147	Apricot
148	Bright Rose

## colour correction kit

This kit permits the colour correction of virtually all mixed light sources found on location. There are twelve materials, including a range of blue and amber colour correction filters, along with a selection of green and magenta colour compensating filters. Packaged: 30.48cm x 26.08cm

201	Full CT Blue	204	Full CT Orange
202	Half CT Blue	205	Half CT Orange
203	Quarter CT Blue	206	Quarter CT Orange
218	Eighth CT Blue	223	Eighth CT Orange
217	Blue Diffusion	207	Full CTO + .3ND
221	Blue Frost	208	Full CTO +.6ND

## variety kit

This kit permits the colour correction of virtually all mixed light. Packaged: 30.48cm x 26.08cm

101	Yellow	3008	Tough Frost
106	Primary Red	3026	Tough White Diffusion
139	Primary Green	3029	Silent Frost
136	Pale Lavender	201	Full CT Blue
162	Bastard Amber	204	Full CT Orange
117	Steel Blue	207	Full CTO +.3ND

## calcolor kit

The CalColor Kit consists of 25cm x 30cm sheets of the 32 colours in the CalColor range.

## diffusion kit

Diffusion materials help modify the harsh character of a light source by softening the beam and the resulting shadows. The twelve materials included in this kit offer a range of diffusion effects, from slight to dense, for dealing with a variety of light sources and situations. Packaged: 30.48cm x 26.08cm

3000	Tough Rolux	3015	Light Tough Silk
3001	Light Rolux	3022	1/4 Tough Spun
3002	Soft Frost	3026	Tough White Diffusion
3006	Tough Spun	3027	Tough 1/2 White Diffusion
3008	Tough Frost	3028	Tough 1/4 White Diffusion
3010	Opal Tough Frost	3029	Silent Frost

## cinegel sampler kit

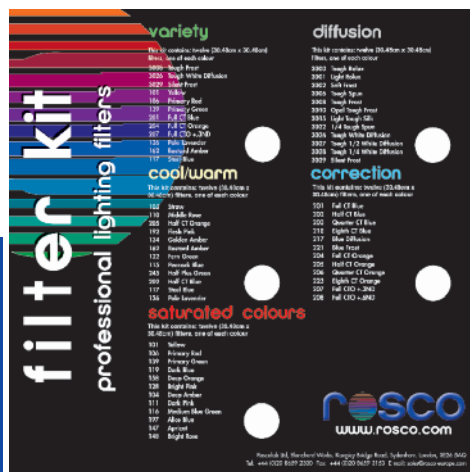
This is an all purpose selection of the most popular Cinegel products. There are twelve light control materials, including diffusion, reflection, colour effects filters and colour correction filters. Packaged: 30.48cm x 26.08cm

3008	Tough Frost	201	Full CT Blue
3026	Tough White Diffusion	204	Full CT Orange
3029	Silent Frost	207	Full CTO +.3ND
101	Yellow	136	Pale Lavender
106	Primary Red	162	Bastard Amber
139	Primary Green	117	Steel Blue

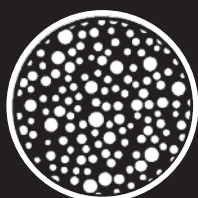
## portrait filter kit

This is an all purpose selection of the most popular Cinegel Colours Packaged: 30.48cm x 26.08cm

184	Cosmetic Peach
186	Cosmetic Silver Roase
187	Cosmetic Rouge
188	Cosmetic Highlight
775	Soft Amber Key
791	Moroccan Frost



# gobos in photography lighting



79650  
Bubbles Small



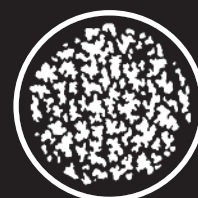
77570  
Sponged



79662  
Linear 9



79092  
Sticks



77805  
Leaf Breakup Medium



77100  
Tree 2



77643  
Double Hung Shadow



77142  
Georgian



77644  
Georgian Shadow



77215  
Louvre



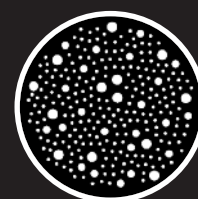
77645  
Venetian Shadow



77177  
Lightning 2



77135  
Regency



77053  
Dot Breakup Medium

Just a small selection of the types of gobos used by photographers.  
To see Rosco's complete range go to: <http://www.rosco.com/gobos/index.cfm>



Photograph created using B-size gobo Regency No. 77135, (at top of picture), E-colour+ 117 and Rosco Alpha 900 fog machine  
Photography by: Tom Museeuw, Fotofolio.



Photograph created using : Gobo Dot Break Up Medium No .77053.  
Photography by: Matt Wiseman and Frank Lambrechts.

# rosco gobo products

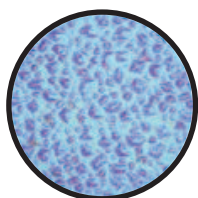
Rosco, the world's largest manufacturer of gobos, offers over 2,000 standard designs. In addition, it provides custom-designed gobos from its purpose-built facilities in the US, the UK and France. Gobos, sometimes called templates or patterns are among the most ubiquitous tools for photographers. Rosco manufactures gobos in steel and glass, in black and white and in full colour.



standard steel designs



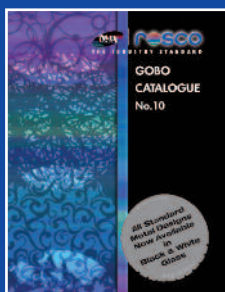
standard glass designs



glass effects



custom



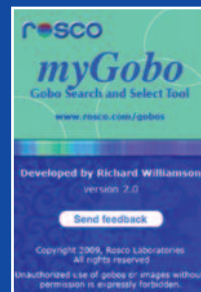
gobo catalogue

Rosco's 80-page catalogue is available free from any Rosco re-seller or at the Rosco website. It shows virtually all the available standard designs.



website

The Rosco Gobo Website makes choosing gobos online easy and fast. You can choose by categories or search by name or number. You can also enlarge or reduce the illustrated designs.



myGobo

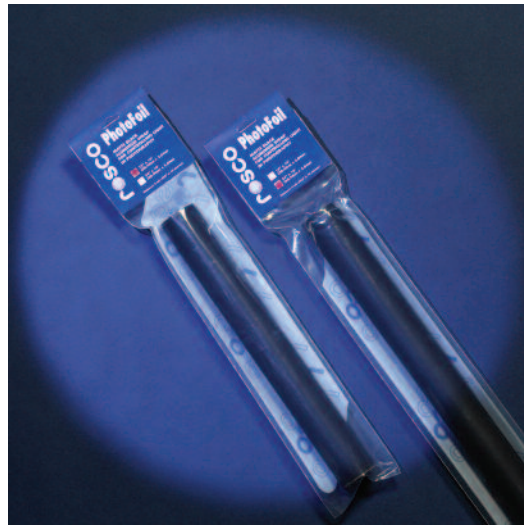
Free app for iPhone, iPad and iPod Touch users. The app contains the entire Rosco gobo library with many user-friendly features for locating, choosing and retaining gobos.

# filter accessories



## cinefoil™

Cinefoil is a matte black aluminium material that virtually soaks up light. Ideal for masking light leaks and/or eliminating unwanted reflections. It can be quickly moulded to form barndoors, flags and other configurations.



## matte black photofoil™

Cinefoil is now available in convenient shorter lengths for still photographers and videographers. Packaged in a protective polytube, Photofoil offers the same light control properties at an economical price



## lens/reflector cleaner

The professional's choice for over 50 years. Especially designed for cleaning lenses, mirrors, reflectors, glass, dichroic filters, and other fine quality optics. Easy to use and fast drying, it quickly removes dirt, residue, smudges and fingerprints and is free of ammonia, detergents and glycerine. The new handy spray bottle is particularly suited for photographers.

## lens tissue

Premium, lightweight, disposable, micro-fiber tissue for cleaning lenses, filters and optics. Lintless and static-free, it contains no abrasives or silicone. Best when used together with Rosco Lens Cleaner. Available in a handy pocket-size.

# lighting design notes

Rosco is working with renowned Stills Photographer and Video Lighting Specialist Ian Pack to bring you a series of Lighting Design Notes.

Each card is intended to inspire you to take your photography to the next level by producing the background to images created with Rosco products. If you would like to receive one of these cards, please contact Rosco.

No. 1  
Hayley by  
Moonlight Grid Cloth




**Lighting Design Notes**



**Rosco Products Used:**  
 Moonlight Grid Cloth #3090 was originally designed for use by film, TV and theatrical lighting applications. By placing it light behind the grid cloth you can create a soft diffuse moonlight effect in the studio or on location.  
 UltraVapor #5152 creates the instant orange of Sodium Vapor street lights without the green spectral content of the actual light source.  
 Rosco BlueBuds are low voltage continuous LED lights which can be used by still and video photographers in a variety of situations and applications both in the studio and on location.


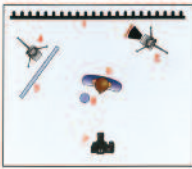
This lighting design note has been designed and photographed by Rosco Stills and Video Lighting Specialist Ian Pack. Each card is intended to inspire you to take your photography to the next level by providing the background to images created with Rosco products.  
 Visit our website for more information about Rosco Products: [www.rosco.com/uk/products/villphotos](http://www.rosco.com/uk/products/villphotos)

No. 3  
Hayley by  
Moonlight Grid Cloth



**Lighting Design Notes**

**Lighting Design:**

**Key to diagram:**

1. Studio wall painted off-white color
2. Canon 550 EX Speedlite Gel Clip, Rosco #3400 14x12 mm ND4 from Studio Collection, Rosco UltraVapor #3152 car lamp 20x24" inner, Rosco Practical for light shaping 1/24x6" power
3. Rosco #3090 Moonlight Grid Cloth hanging 10cm from light source
4. Canon 550 EX zoomed to 105 mm, 1/32nd power roughly 3 feet from Hayley
5. Hayley in hoodie top
6. Practical light Rosco BlueBud 3' bracket with power cable run down Hayley's sleeve to B.A.A. battery pack tucked into waistband. 2 x cam #3200 CTR
7. Photographer, about 20 feet away slightly lower than eye level

**Rosco Stockist:**

Roscolab Ltd • Kangley Bridge Rd • Sydenham • London • SE26 5AQ • England  
 Tel: +44 (0)20 8659 2300 • Fax: +44 (0)20 8659 3153 • Email: [sales@rosco-europe.com](mailto:sales@rosco-europe.com)  
[WWW.ROSCO.COM](http://WWW.ROSCO.COM)

## fog

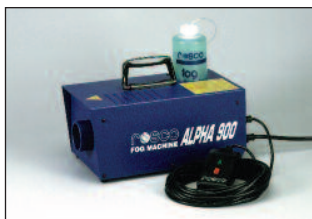
### model 1700

Enhance your photographs with the Rosco Model 1700 fog machine, a high quality machine - durable, dependable, and with a lower cost. It has a remote stored on board with a 4.57m cable and fine control for volume as well as on-board timers.



### alpha 900

Rosco's most economical fog machine, an excellent choice for applications where the effect does not need volume control. Weighing only 5kgs the Alpha 900 is ideal for photography.



## rosco fog fluid

When vaporized, the water based formulation produces a dense, realistic fog.

### stage & studio fog fluid

For fast dissipating effects.

### clear fog fluid

The same effect as Rosco fog fluid, but without the colour or scent.

### light fog fluid

A lighter less dense smoke.



Rosco's fog fluid won an Academy Award for "...the development of a safe, non-toxic fluid....."



**Roscolab Limited**  
**Kangley Bridge Road**  
**Sydenham**

**London SE26 5AQ**

**Tel: +44 (0)20 8659 2300**

**Fax: +44 (0)20 8659 3153**

**E-mail: [contact@rosco.com](mailto:contact@rosco.com)**

**German Office:**

Görlitzer Str.2, D-33758 Schloss Holte-Stukenbrock  
Tel: +49 (0)5207 995989 Fax: +49 (0)5207 925 989

**Netherlands Office:**

Claus Sluterweg 125/1b, 2012 WS Haarlem  
Tel: +31 (0)23 5288 257 Fax: +31 (0)23 5286 754

**Rosco Ibérica:**

C/Oro 76 Polígono Industrial Sur, 28770 Colmenar Viejo, Madrid  
Tel: +34 918 473 900 Fax: +34 918 463 634

**French Office:**

44-50 Avenue du Capitaine Glarner, Le Baldi /Bâtiment D/1er étage,  
93400 Saint-Ouen, France  
T: +33 (0)1 58 34 99 99 F: +33 (0)1 58 79 29 29

**Rosco Laboratories Inc:**

52 Harbor View Avenue, Stamford, CT 06902, USA  
Tel: +1 203 708 8900 Fax: +1 203 708 8919

1265 Los Angeles Street, Glendale, CA 91204, USA  
Tel: +1 818 543 6700 Fax: +1 818 662 9470

**Rosco Laboratories Ltd:**

1241 Denison St. No.44, Markham, Ontario L3R 4B4, Canada  
Tel: +1 905 475 1400 Fax: +1 905 475 3351

Unit 107, 3855 Henning Drive, Burnaby, Vancouver V5C 6N3, Canada  
Tel: +1 604 298 7350 Fax: +1 604 298 7360

**Rosco do Brasil Ltda**

Rua Visconde de Itaboraí, 141, Tatuapé, São Paulo-SP, Cep: 03308-050, Brasil  
Tel: +55 11 2098 2865 Fax: +55 11 2098 0193

**Rosco Australia Pty Ltd:**

42 Sawyer Lane, Artarmon 2064, New South Wales, Australia  
Tel: +61 2 9906 6262 Fax: +61 2 9906 3430

*“Rosco leads with innovative solutions allowing creative people to achieve their vision while creating a compelling culture and sustainable growth.”*