

SYSTEM PROPERTIES



Gravity Casting: All the strategic aluminum components which have to guarantee safety of the product are made using the Gravity Casting technology. This process excludes any possibility of having air bubbles getting into the casting.



Quick Action Device: This mechanical concept allows an incredible speed in locking and unlocking the clamp's jaws. The Quick Action line of clamps consists of four models that in dimension, load capacity (up to 220lbs) and coupling range (up to 1.97in).

max load

spigot/socket type

1322lbs				C345 C345K C345BK ø 1.65"-2.1"	
1102lbs	C4460 ø 1.65"-2.1"	C4469 ø 1.65"-2.1"			
661lbs	C4560 ø 1.65"-2.1"			C4465 ø 1.65"-2.1"	
551lbs				C100 ø 0.79"-2.2"	
330lbs	C339 ø 1.6"-2.6"				
220lbs		C345 C345K C345BK ø 1.65"-2.1"		C337 ø 1.6"-2.8"	
165,3lbs		C150 ø 1.1"-3.1"		C339UH ø 1.6"-2.6"	
110lbs	C280 ø 1.2"-2.1"	C339BB ø 1.6"-2.6"		C295 ø 1.2"-2.1"	
33lbs		C1575 ø 0.5"-2.2"	C1550 ø 0.5"-2.2"		
22lbs			C500 ø 0.6"-3.1"		
	13mm hole	female 16mm - 5/8"	female 17mm	female 28mm - 1" 1/8	



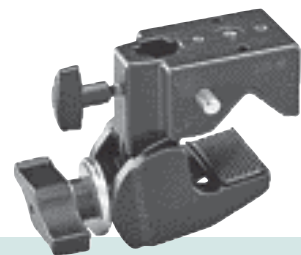
FEM Analysis: All the structural components that are crucial for the safety or have to support high stress are engineered using the FEM analysis. The FEM (Finite Element Method) permits simulation of external forces in different applications and to calculate the resulting stress on the component. Using this tool Avenger can optimize the design of the product obtaining the highest performance combined with the lowest weight.



Multifix: The Multifix feature of the "System" product family offers an incredible range of different attachments. Thank to the multifix system the user can hang the product in a various ways. The clamps are manufactured with multi attachment points or a single attachment points available with a variety of different fixing accessories.

					1322lbs
C4464 ø 1.7"-2.1"	C4462 ø 1.7"-2.1"	C4461 ø 1.7"-2.1"			1102lbs
C4564 ø 1.9"-2.1"		C4470 ø 1.7"-2.1"		C4463 ø 1.9"-2.1"	661lbs
					551lbs
		C339JS ø 1.6"-2.6"	C339SP ø 1.6"-2.6"	C339LE ø 1.6"-2.6"	330lbs
C151 ø 28-78mm	C345-C345K C345BK ø 1.7"-2.1"	C210 ø 0.4"-2.2"			220lbs
	C339UH ø 1.6"-2.6"				165,3lbs
	C338 ø 0.8"-2.1"	C285 ø 1.2"-2.1"	C290 ø 1.2"-2.1"		110lbs
					33lbs
	C150 ø 1.1"-3.1"	C500 ø 0.6"-3.2"			22lbs
M12	male 16mm - 5/8"	male 28mm - 1" 1/8	pulley	ring	

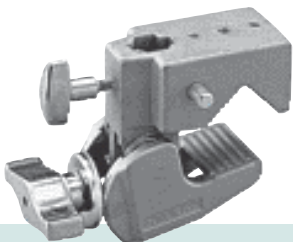
CLAMP SYSTEM



C1575B
SUPER CLAMP

- 1lbs
- 33lbs
- 16mm 5/8"

Ideal clamp for Cine, Broadcast or Lighting & Entertainment applications. Clamping system achieved via a metal knob ensuring extra solidity. Works on diameters from 0.51in to 2.16in.



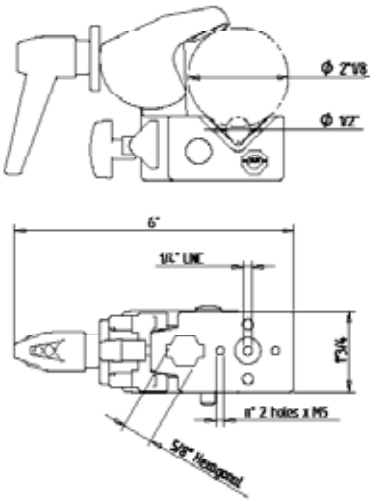
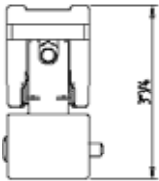
C1550
HEAVY DUTY
SUPER CLAMP

- 1lbs
- 33lbs
- 16mm 5/8"
- 90°

Extra strong version of Super Clamp because of a special manufacturing process named gravity casting, allowing heavier manipulation. Works on diameters from 0.51in to 2.16in.

PRODUCT BELOW IS AVAILABLE AS OPTIONAL

E600
E600C
SUPER CLAMP
ADAPTERS



C155
SAFETY CABLE

Diameter 0.16in. Length 39.3in.

C155-01
SAFETY CABLE

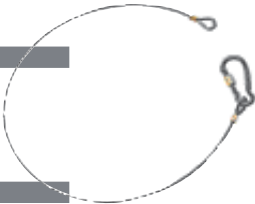
Diameter 1.37mm. Length 27.5in.

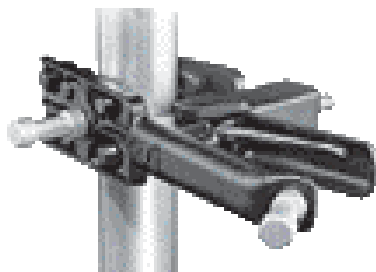
C155-02
SAFETY CABLE

Diameter 1.9in. Length 27.5in.

C155-03
SAFETY CABLE

Diameter 2.3in. 39.3in.





C1525 SKY HOOK



1.8lbs

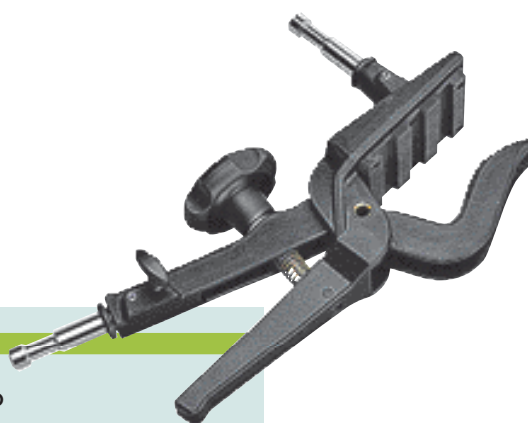
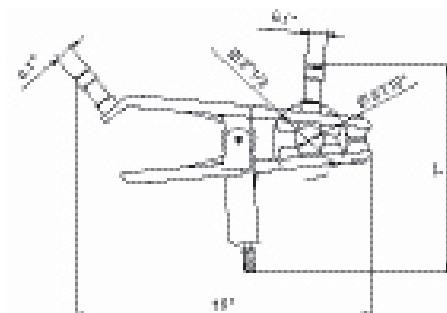


6.1"



6.1"

Gaffer grip with adjustable jaws.
Grip from: 1in to 2.5in.



C500 PELICAN GAFFER GRIP



3.1lbs



22lbs



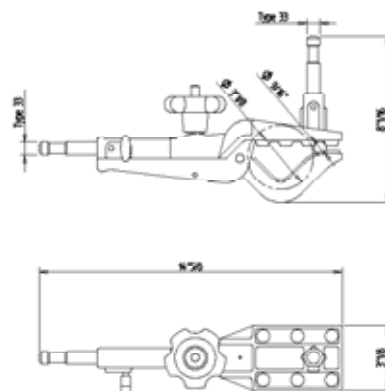
17mm



16mm
5/8"



Works on diameters 0.6in to 3.1in.

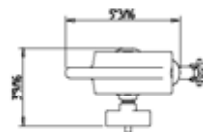
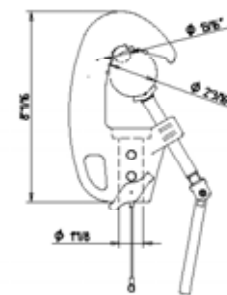


CLAMP SYSTEM

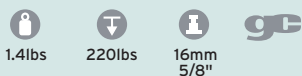
C100 JUNIOR PIPE CLAMP WITH 1" 1/8 SOCKET



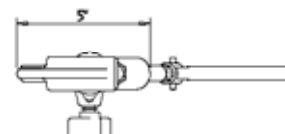
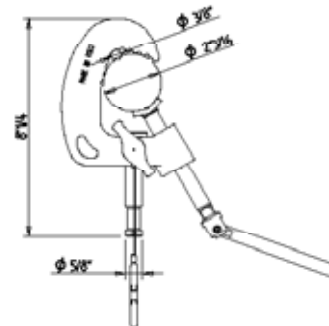
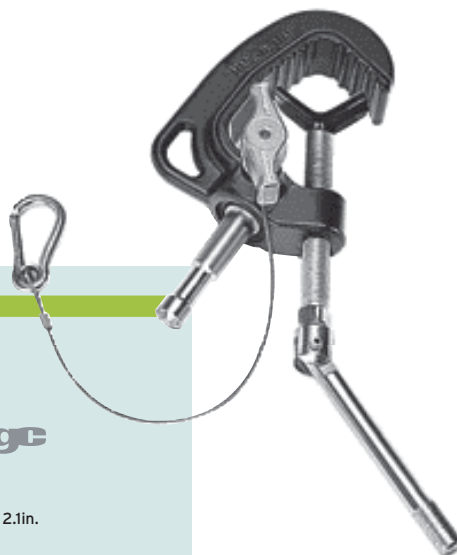
Works on diameters from 0.78in to 2.1in.



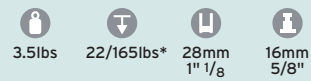
C210 BABY PIPE CLAMP WITH 5/8" STUD



Works on diameters from 0.39in to 2.1in.

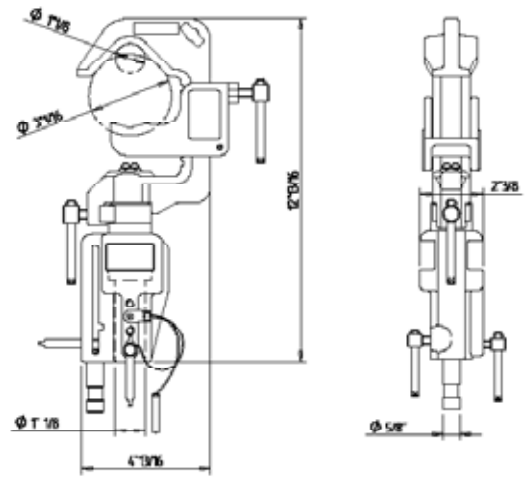


C150 SWIVELING "C" CLAMP



Works on diameters
from 1.1in to 3in.

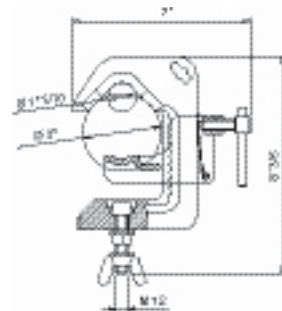
* 22lbs on 5/8in attachment,
165lbs on 1 1/8in attachment.



C151 SWIVELING "C" CLAMP WITH M12 SCREW



Works on diameters from 1.1in to 3.1in.





CLAMP SYSTEM

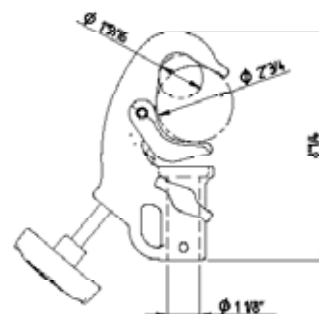
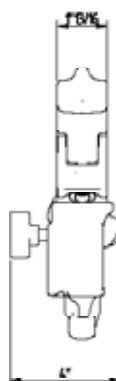


C337 QUICK ACTION JUNIOR CLAMP 1" 1/8 BUSHING

		
2.8lbs	220lbs	28mm 1" 1/8

Made in gravity cast aluminum, this clamp is ideal to hang all types of luminaires in TV studios and theaters. Its incredible "coupling range" sets almost no limitations to its capability to clamp to almost all the industry standard pipe diameters. To meet all safety requirements, we have designed a dedicated slot for flexible steel safety cables. Supplied with T-top padded handle to improve grip. Pipe size 1.56in - 2.75in.

 Pat pending 

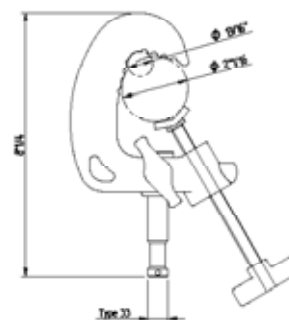


C338 QUICK ACTION BABY CLAMP 5/8" PIN

		
1.7lbs	110lbs	16mm 5/8"

Very slim and lightweight, this version has been designed for small luminaires, virtually unlimited in application. To meet all safety requirements, we have designed a dedicated slot for flexible steel safety cables. Pipe size 0.75in - 2.04in.

 Pat pending

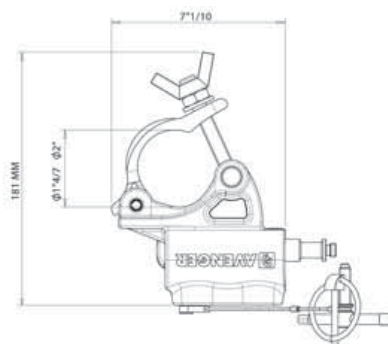
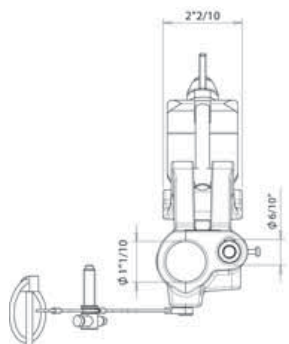


C345 BARREL CLAMP



Works on diameters from 16.8lbs to 20.5lbs.

* 220lbs on 5/8" attachment,
1322lbs on 1 1/8" attachment.

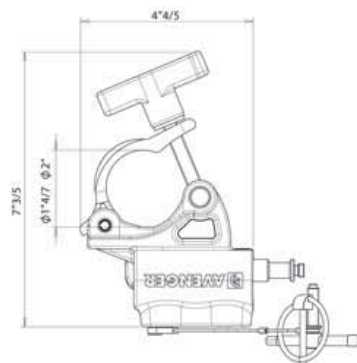
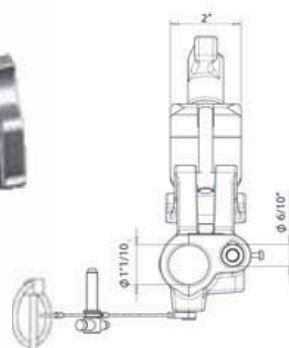


C345K BARREL CLAMP



Works on diameters
from 16.8lbs to 20.5lbs.

* 220lbs on 5/8" attachment,
1322lbs on 1 1/8" attachment.



CLAMP SYSTEM



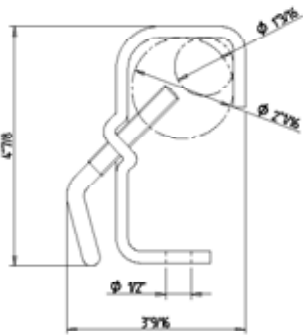
C280
STAGE CLAMP

- 0.8lbs
- 110lbs
- 0.51in hole



C285
STAGE CLAMP WITH
5/8" STUD

- 1lbs
- 110lbs
- 16mm 5/8"



Work on diameters from 1.18in to 2in.
The double locking knob position always
provides an optimal grip point.



C290
STAGE CLAMP WITH
1" 1/8 STUD

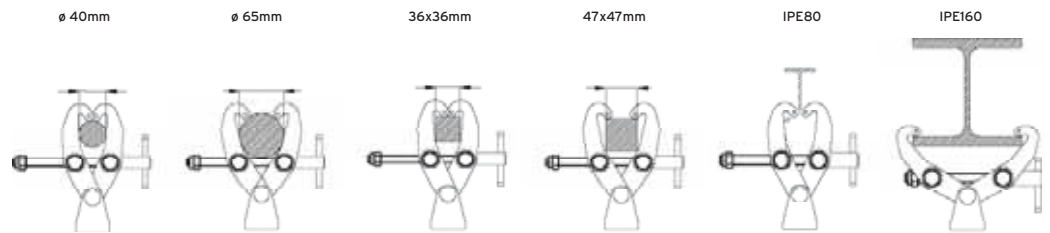
- 2lbs
- 110lbs
- 16mm 5/8"



C295
STAGE CLAMP WITH
1" 1/8 SOCKET

- 1.7lbs
- 110lbs
- 28mm 1" 1/8"

The Grab Clamp is flexible and fast to use thanks to its pincer jaw design and rapid locking and release mechanism. It can be fixed to a wider range of supports than traditional clamps and is suitable for use in TV, video and photographic studios, theatres and rigging structures. The Grab Clamp will hold all kinds of lights, scenery, monitors and much more besides. The Grab Clamp has been designed to be mounted on a wide range of beams, pipes and bars, whether round, square or rectangular in section. It needs no adapter - just open and clamp it.



Clamp Range: 1.6in to 2.6in

Clamp Range: 1.4in to 1.9in

Clamp Range: IPE 80 to IPE 160
HEB 80 to HEB 160

IPE and HEB is Standard Building Code for beams.



C339 GRAB CLAMP

2.6lbs 330lbs 0.49" hole

Supplied without attachment, but with a 0.49" hole for custom fixings.



C339JS GRAB CLAMP WITH 1" 1/8 TV SPIGOT

3.1lbs 330lbs 28mm 1" 1/8

Supplied with 1" 1/8 spigot.



C339BB GRAB CLAMP WITH 5/8" BUSHING

3lbs 110lbs 16mm 5/8"

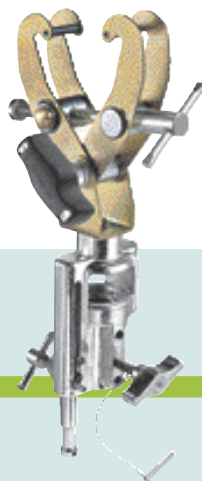
Comes with 5/8" bushing complete with push button for extra-safe attachment.



C339LE GRAB CLAMP WITH LIFTING EYE

3.1lbs 330lbs Ring

Complete with standard lifting eye for chain or rope fixture.



C339UH DOUBLE GRIP HEAD

4.3lbs 165lbs 28mm 1" 1/8 16mm 5/8"

Provided with a universal fixed (non-rotating) head.



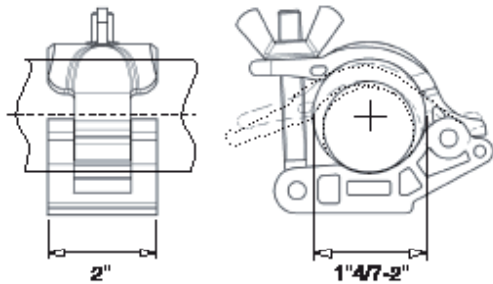
C339SP GRAB CLAMP WITH SPINNING PULLEY

3.6lbs 330lbs Pulley

Fitted with a 3.9in diameter pulley to offer a quick and robust hanging point for TV and theatre sceneries.

MP EYE COUPLER **SYSTEM**

MP EYE COUPLERS: wider clamp range from 1 1/4in to 2in and special flattened shape of lower jaw.



C4460

MP EYE COUPLER

0.9lbs 1100lbs 13mm hole

The base model of MP Eye Coupler for any customized application.



C4461

MP EYE COUPLER WITH 1" 1/8 TV SPIGOT

1.3lbs 1100lbs 28mm 1" 1/8

Supplied with 1 1/8" spigot for TV/broadcast luminaires.



C4462

MP EYE COUPLER WITH 5/8" SPIGOT

1lbs 1100lbs 16mm 5/8"

Designed with 5/8" spigot suitable for lightweight luminaires.





C4463

MP EYE COUPLER WITH LIFTING RING



1.3lbs



660lbs



Ring

Provided with lifting ring for multipurpose use with chains, wires and ropes.



C4464

MP EYE COUPLER WITH M12 BOLT PLUS NUT



0.9lbs



1100lbs



M12x27

Twin couplers fixed parallel for firm, quick and easy interconnection for truss, bars or pipes.



C4465

MP EYE COUPLER WITH 1" 1/8 BUSHING



1.9lbs



660lbs



28mm
1" 1/8

Designed with 1" 1/8 bushing suitable for 2K+ stirrup luminaires.

MP EYE COUPLER **SYSTEM**



C4469
MP EYE COUPLER
WITH 5/8" BUSHING



0.9lbs 1100lbs 16mm
5/8"

Supplied with 5/8" spigot for light fixing accessories.

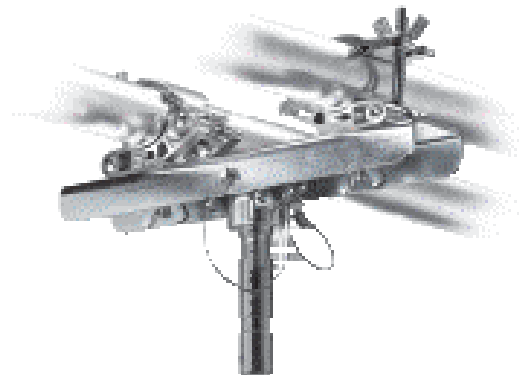


C4470
TILT & SWIVEL
MP EYE COUPLER



2.9lbs 660lbs 28mm
1" 1/8"

Provided with 1 1/8" spigot to enable to rig a bar or a frame structure between two stands with 360° spigot rotation and swivel system.



C4485
SWIVEL MP EYE COUPLER
AND TILT
TRUSS SUPPORT 150-250



6.1lbs 28mm
1" 1/8"

Truss Support Coupler with a tilt/swivel connection to the stand pin. It avoids torsion and mounting problems when lifting a truss using two stands simultaneously. Min. length 5.9in. Max. length 9.8in.

C4482
SWIVEL
MP EYE COUPLER



1.8lbs

Twin couplers free to rotate 360° for firm, quick and easy coupling of trusses, bars or pipes.



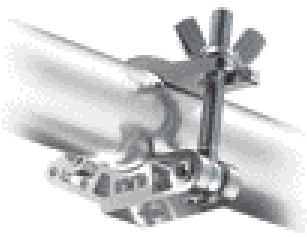
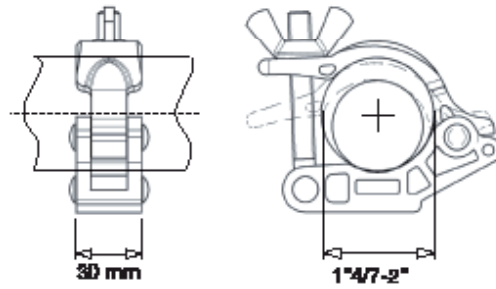
C4486
SWIVEL MP EYE COUPLER
AND TILT
TRUSS SUPPORT 200-400



6.3lbs 28mm
1" 1/8"

Min. length 7.9in. Max. length 15.7in.

MP SLIM EYE COUPLERS: same features as MP coupler, but narrower in profile and lighter in weight.



C4560

SLIM MP EYE COUPLER



0.6lbs



660lbs



0.51in
hole

The base model of MP slimlight version Eye Coupler.



C4564

MP EYE COUPLER 12MM BOLT + NUT



0.7lbs



660lbs



M12x27mm

Supplied with M12 bolt and nut for custom solutions.

